

Sustainable Groundwater Management Act Update

Sierra Ryan
County of Santa Cruz

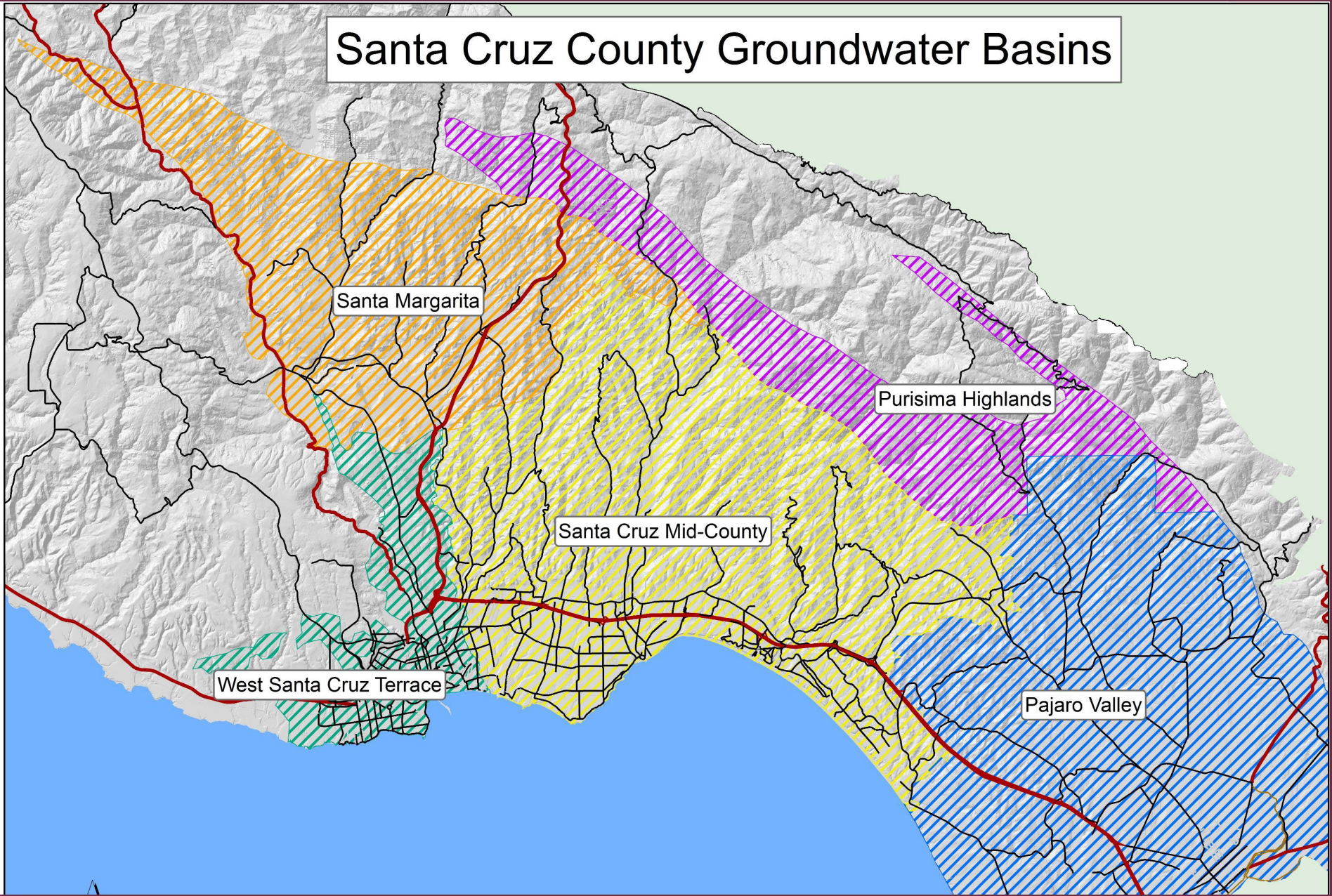


SANTA MARGARITA
Groundwater Agency



Pajaro Valley
Water Management Agency

Santa Cruz County Groundwater Basins



Groundwater Basins in Santa Cruz County

3 require management under Sustainable Groundwater Management Act (SGMA)

The Purpose of Groundwater Management

Unmitigated groundwater pumping Statewide has lead to numerous economic and environmental problems.

State mandate to avoid any further undesirable results:

- Reduction In Groundwater Storage
- Seawater Intrusion
- Degraded Water Quality
- Land Subsidence
- Chronic Groundwater Overdraft
- Surface Water Depletions Impacts on Human & Ecological Uses



Phases of GSP Development and Implementation



GSP Contents

Administrative information

Basin Setting

Sustainable Management Criteria

Monitoring Networks

Projects and Management Actions

Sustainable Management Criteria

- Groundwater Levels
- Groundwater Storage
- Seawater Intrusion
- Water Quality
- ~~Land Subsidence~~
- Interconnected Surface Water

Sustainability Indicator

IM #1

IM #2

IM #3

Measurable Objective

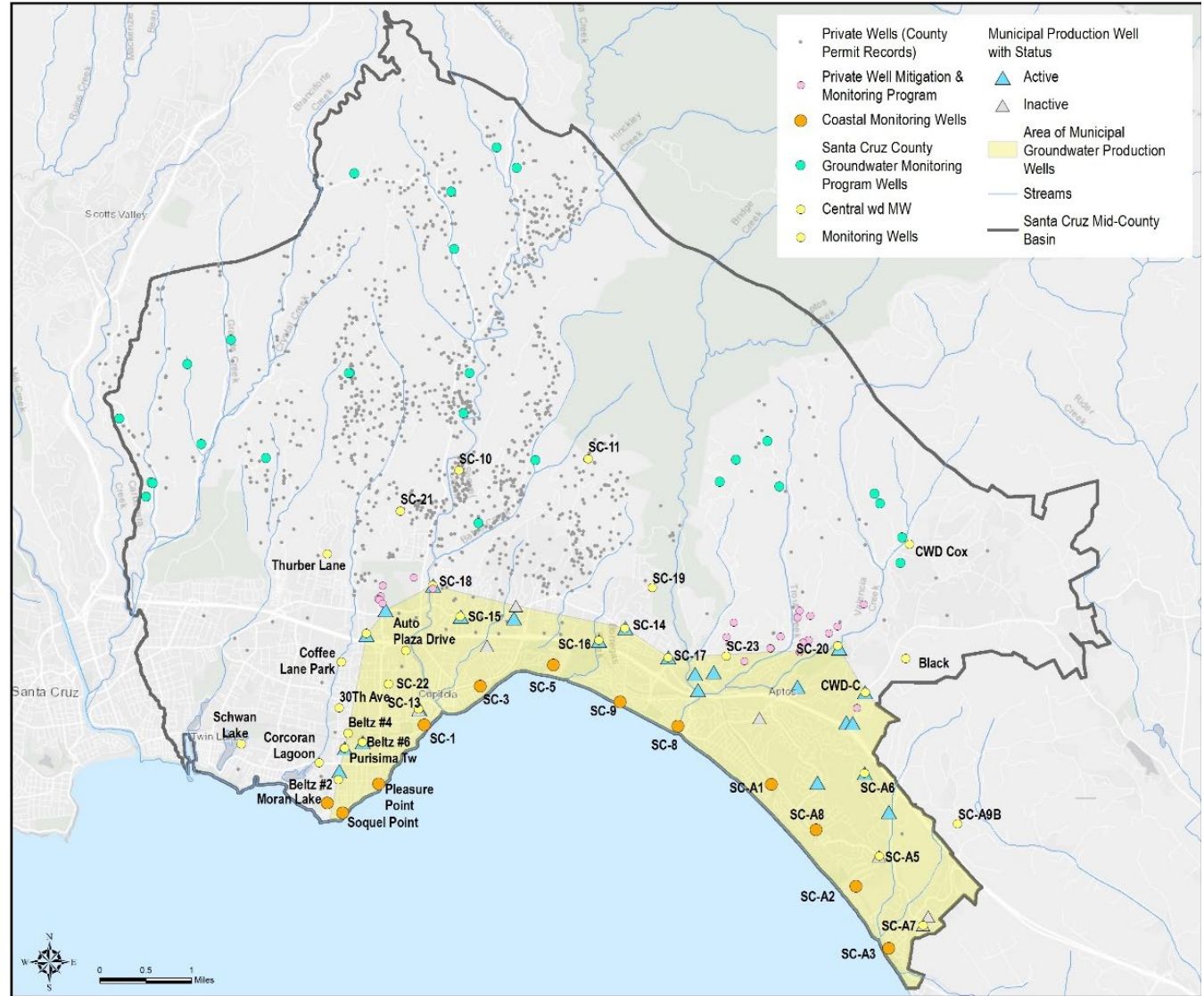
Minimum Threshold

Significant & Unreasonable Conditions

Sustainable Groundwater Management

Santa Cruz Mid-County Groundwater Agency (MGA)

- High Priority Basin in Critical Overdraft
- Main issue of concern is Seawater Intrusion



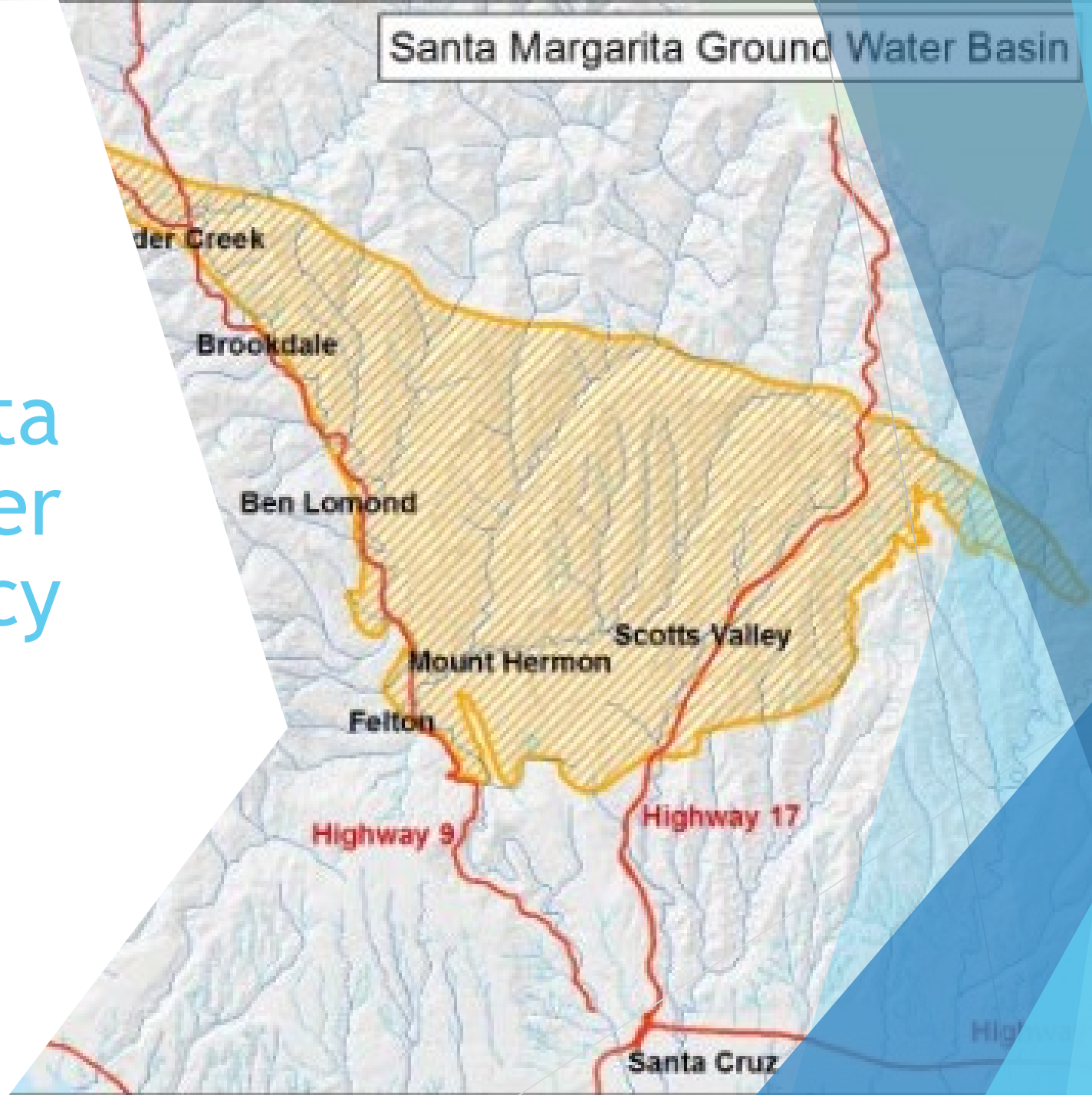
Stakeholders/Water Users

Water pumper	2016 approximate groundwater extraction in acre-feet	Percent of Total GW
Santa Cruz WD	480.00	8.7384%
Soquel Creek WD	3,090.00	56.2534%
Central WD	381.00	6.9361%
Small Water Systems	85.00	1.5474%
Institutional	190.00	3.4589%
Private wells	552.00	10.0492%
Agriculture	715.00	13.0166%
Environmental Users	N/A	N/A

MGA – Regional Groundwater Agency

- Local Agencies Created MGA - March 2016
 - County of Santa Cruz (JPA)
 - City of Santa Cruz (JPA)
 - Central Water District (JPA)
 - Soquel Creek Water District (JPA), plus
 - Private Well Representatives (three applicants selected from over 20 applications)
- GSP Advisory Committee first meeting Oct 25, 2017
- Groundwater Sustainability Plan submitted in 2020

Santa Margarita Groundwater Agency

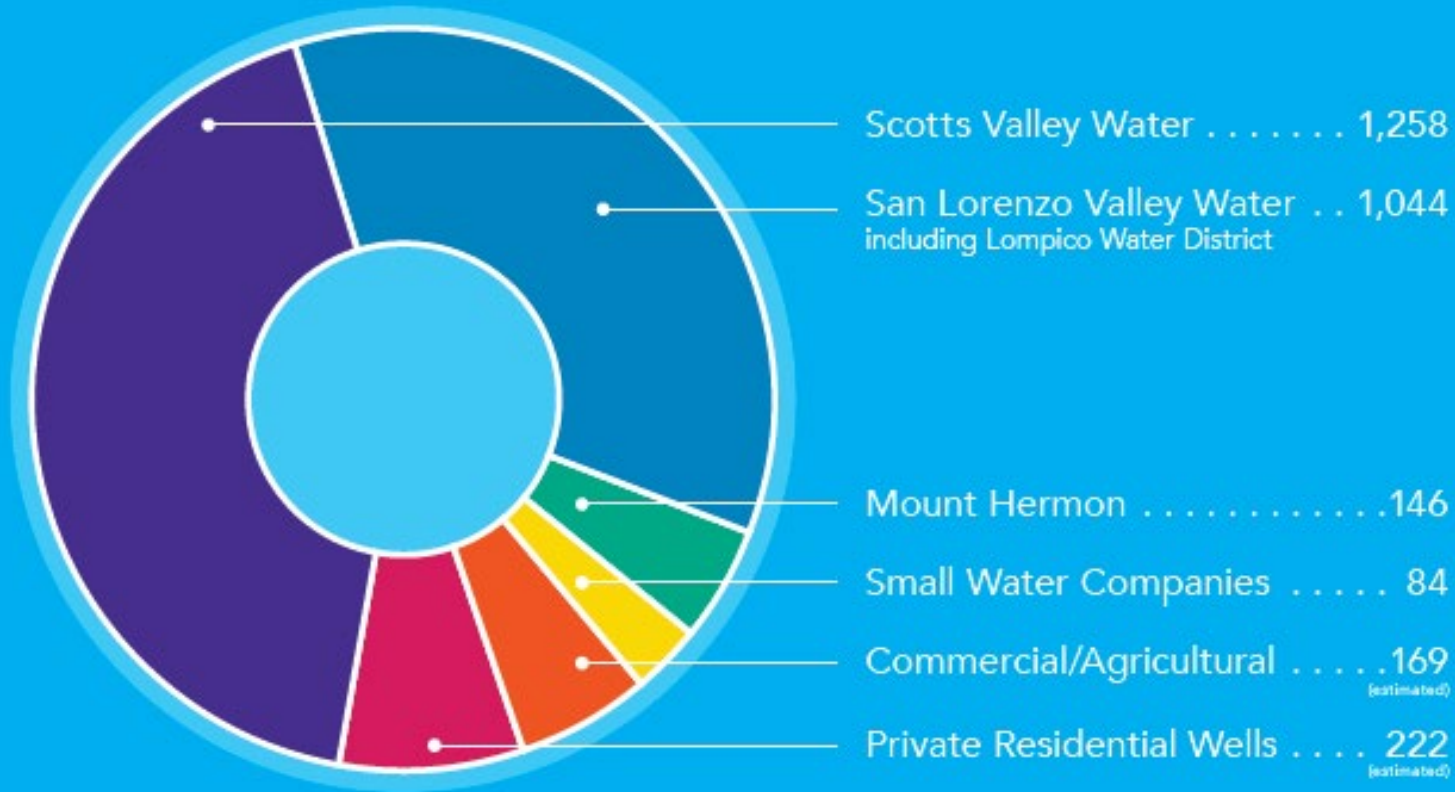


Santa Margarita Basin

- ▶ Medium Priority Basin
- ▶ Biggest issue of concern is surface water depletion
- ▶ One urban center, but predominant land use is rural residential
- ▶ Currently developing the GSP, draft will be out for public review this July.

Groundwater Production in Santa Margarita Basin

(WY 2013-17 average in acre feet)



1,100
parcels are served
by private wells



40-50%
of the San Lorenzo River
baseflow is from the Basin
(main water source for
City of Santa Cruz)



Fish
The San Lorenzo River
and tributaries support
steelhead trout and
coho salmon

SANTA MARGARITA
Groundwater Agency

Groundwater sustainability
is all our responsibility
smgwa.org

Santa Margarita Groundwater Agency(SMGWA)

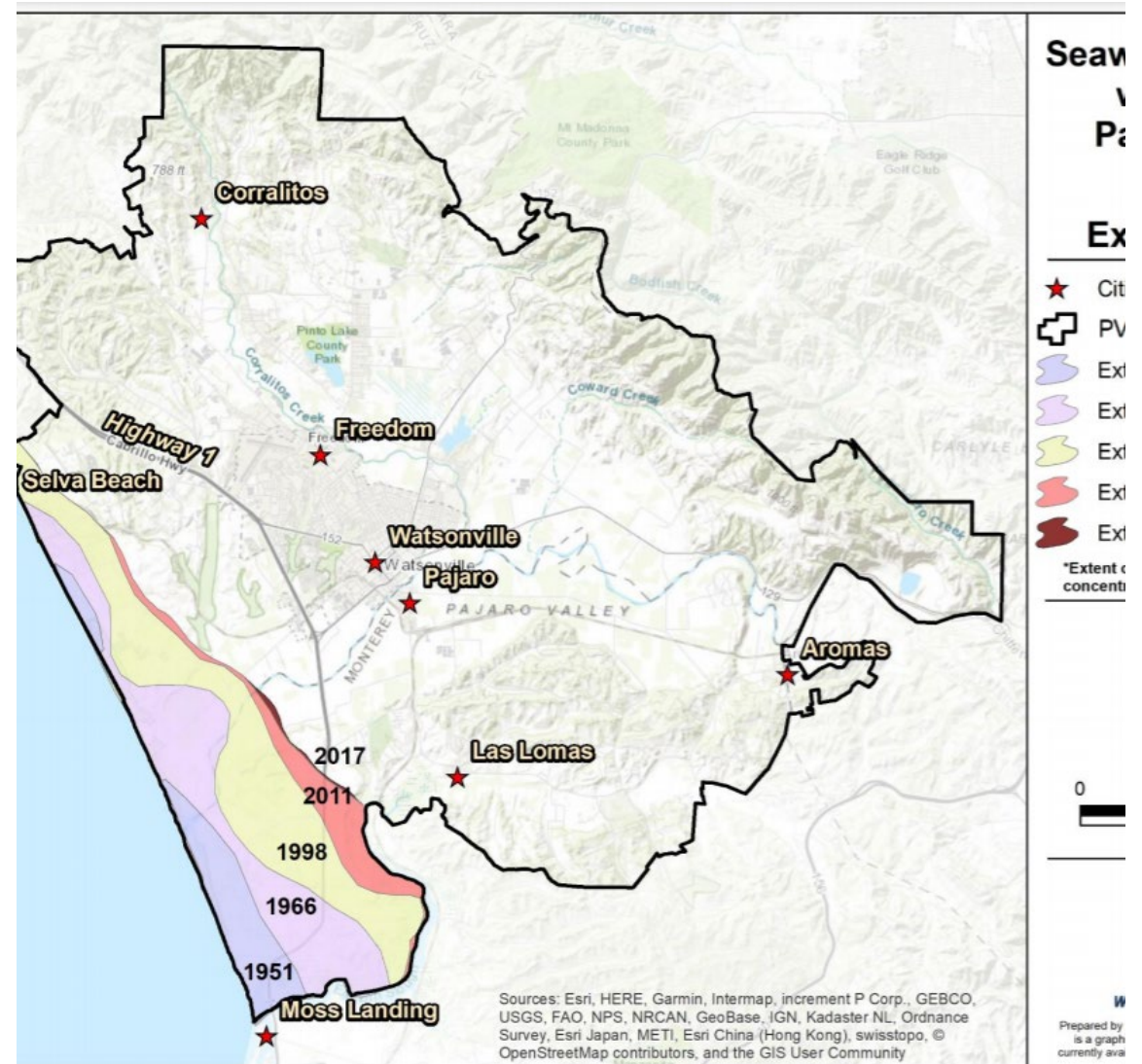
Joint Powers Authority and Board

- ▶ San Lorenzo Valley Water District (JPA and 2 Board Seats)
- ▶ Scotts Valley Water District (JPA and 2 Board Seats)
- ▶ County of Santa Cruz (JPA and 2 Board Seats)

- ▶ Private Well Owner/Small Water System Representatives (2 Board Seats - self-nomination process)
- ▶ City of Scotts Valley (1 Board Seat)
- ▶ Mount Hermon Association (1 Board Seat)
- ▶ City of Santa Cruz (1 Board Seat)

PV Water Basin Management Plan Update

- DWR accepted the BMP as the GSP in 2019
- Provided recommendations to PV Water to update the BMP to meet the requirements of SGMA
- Currently working with a committee to update the plan.



How are Smaller Water Systems Impacted?

Unlikely to see much change due to SGMA in PV
Water

All systems are already metered throughout the
County

Reporting process may be updated

Data will be compiled in the regional Data
Management System

It is possible that MGA, SMGWA, or both will
ultimately initiate a fee for extractions to help
cover the cost of basin management

Any
Questions?

Sierra Ryan

Sierra.ryan@santacruzcounty

831 454-3133